

# DANISH



INDOOR | OUTDOOR COLLECTION 2025



At TGS, we design, manufacture and distribute timeless furnitures. We believe that a good piece of furniture should last the test of time while maintaining it's true character throughout its lifetime. Our original designs are crafted with quality materials by a skillful team with great attention to detail. Craftsmanship is at the heart of our creations. With dedication and passion, we shape each piece of wood into an exquisite work of art, along with other supportive materials to compliment the design. From the graceful curves to the precise joinery, our attention to detail ensures that every aspect of our furniture reflects true mastery.

Centred around aspects of quality and warm materials, alongside form and function, we create collections for every room or space.

# CONTENTS

## INSPIRATION

Lookbook 04

## DANISH

Lounge 09

## SUPPORT

Material Overview 13

Product Overview 14

Sustainability 15





DANISH  
COLLECTION

DANISH LOUNGE CHAIR  
DANISH SOFA 96"



DANISH  
COLLECTION

DANISH LOUNGE CHAIR



DANISH  
COLLECTION

DANISH LOUNGE CHAIR  
DANISH SOFA 84"

DANISH SOFA 96"

DANISH  
COLLECTION

DANISH SOFA 84"



## LOUNGE

The Danish collection embodies timeless design and thoughtful craftsmanship, made to suit both indoor and outdoor living. With subtle nods to vintage design and a modern sensibility, each piece showcases the natural beauty of teak through softly contoured forms and warm, organic details. From sunlit patios and garden retreats to serene interior spaces, the collection brings a sense of comfort and quiet elegance to every setting.



# DANISH LOUNGE CHAIR

## Dimensions

### WOODEN FRAME

L 71 x W 87 x H 79 cm

L 28" x W 34 1/2" x H 31"

## Finish Options

### INDOOR WOOD



TEAK <sup>®</sup><sub>®</sub>  
WEATHERED



TEAK <sup>®</sup>  
GOLDEN BROWN



TEAK <sup>®</sup><sub>®</sub>  
BLACK

### OUTDOOR WOOD



TEAK <sup>®</sup>  
PREMIUM



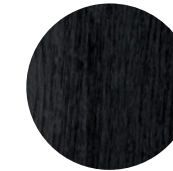
TEAK <sup>®</sup>  
SELECT



TEAK <sup>®</sup><sub>®</sub>  
WEATHERED



TEAK <sup>®</sup>  
GOLDEN BROWN



TEAK <sup>®</sup><sub>®</sub>  
BLACK

Made from 100% solid Teak.  
100% Olefin fabric, washable up to 30°C/86°.  
Quick-dry foam or normal foam.



# DANISH SOFA 72"

## Dimensions

### WOODEN FRAME

L 183 x W 87 x H 79 cm

L 72" x W 34 1/2" x H 31"

## Finish Options

### INDOOR WOOD



TEAK ©  
WEATHERED



TEAK ©  
GOLDEN BROWN



TEAK ©  
BLACK

### OUTDOOR WOOD



TEAK ©  
PREMIUM



TEAK ©  
SELECT



TEAK ©  
WEATHERED



TEAK ©  
GOLDEN BROWN



TEAK ©  
BLACK

Made from 100% solid Teak.  
100% Olefin fabric, washable up to 30°C/86°.  
Quick-dry foam or normal foam.





# DANISH SOFA 84"

## Dimensions

### WOODEN FRAME

L 213 x W 87 x H 79 cm

L 84" x W 34 1/2" x H 31"

## Finish Options

### INDOOR WOOD



TEAK <sup>®</sup>  
WEATHERED



TEAK <sup>®</sup>  
GOLDEN BROWN



TEAK <sup>®</sup>  
BLACK

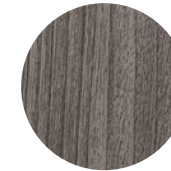
### OUTDOOR WOOD



TEAK <sup>®</sup>  
PREMIUM



TEAK <sup>®</sup>  
SELECT



TEAK <sup>®</sup>  
WEATHERED



TEAK <sup>®</sup>  
GOLDEN BROWN



TEAK <sup>®</sup>  
BLACK

Made from 100% solid Teak.  
100% Olefin fabric, washable up to 30°C/86°.  
Quick-dry foam or normal foam.



# DANISH SOFA 96"

## Dimensions

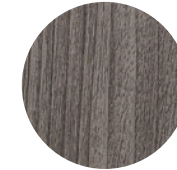
### WOODEN FRAME

L 244 x W 87 x H 79 cm

L 96" x W 34 1/2" x H 31"

## Finish Options

### INDOOR WOOD



TEAK ©  
WEATHERED



TEAK ©  
GOLDEN BROWN



TEAK ©  
BLACK

### OUTDOOR WOOD



TEAK ©  
PREMIUM



TEAK ©  
SELECT



TEAK ©  
WEATHERED



TEAK ©  
GOLDEN BROWN



TEAK ©  
BLACK

Made from 100% solid Teak.  
100% Olefin fabric, washable up to 30°C/86°.  
Quick-dry foam or normal foam.



# Material Overview

## INDOOR WOOD



TEAK <sup>®</sup><sub>B</sub><sup>®</sup><sub>V</sub>  
WEATHERED



TEAK <sup>®</sup><sub>V</sub>  
GOLDEN BROWN



TEAK <sup>®</sup><sub>B</sub><sup>®</sup><sub>V</sub>  
BLACK

## OUTDOOR WOOD



TEAK <sup>®</sup><sub>N</sub>  
PREMIUM



TEAK <sup>®</sup><sub>N</sub>  
SELECT



TEAK <sup>®</sup><sub>B</sub><sup>®</sup><sub>V</sub>  
WEATHERED



TEAK <sup>®</sup><sub>V</sub>  
GOLDEN BROWN



TEAK <sup>®</sup><sub>B</sub><sup>®</sup><sub>V</sub>  
BLACK

## Material Icons

You may come across these icons within this catalog.

- N** **Natural**  
The items marked with the **N** icon come without any finishing or protective treatment applied to the surface. A natural finish enhances the inherent beauty of the material but can require more maintenance.
- V** **Varnished**  
The items marked with the **V** icon are finished with varnish
- B** **Brushed**  
The items marked with the **B** icon are brushed. This finishing gives our furniture more depth, the rougher surface highlights the grain of the wood.

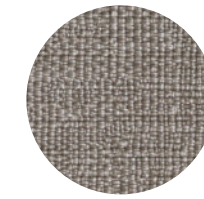
## INDOOR | OUTDOOR FABRIC



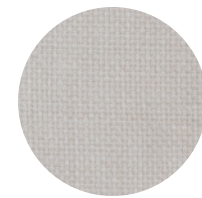
AMBER  
CHALK WHITE



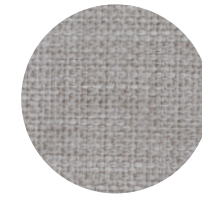
AMBER  
ECRU BEIGE



AMBER  
TAUPE BROWN



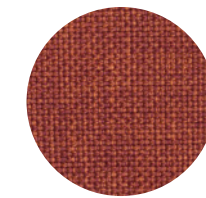
INDIRO UNITO  
CHALK WHITE



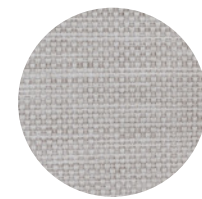
INDIRO UNITO  
ECRU BEIGE



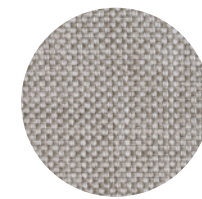
INDIRO UNITO  
AVANA BEIGE



INDIRO UNITO  
TERRACOTTA



INDIRO PUNTINATO  
CHALK ECRU



INDIRO PUNTINATO  
ECRU TAUPE

## Quick Ship

These fabrics are part of our Quick Ship Program and are kept in stock for faster production and delivery.

## Additional Fabric Options

We also offer a wider selection of fabrics available upon request. Please note that these fabrics are not kept in stock.

## Fabric Specification

100% Olefin fabric, washable up to 30°C/86°.



# Product Overview

DANISH LOUNGE CHAIR



L 71 x W 87 x H 79 cm | L 28" x W 34 1/2" x H 31"

DANISH SOFA 84"



L 213 x W 87 x H 79 cm | L 84" x W 34 1/2" x H 31"

DANISH SOFA 72"



L 183 x W 87 x H 79 cm | L 72" x W 34 1/2" x H 31"

DANISH SOFA 96"



L 244 x W 87 x H 79 cm | L 96" x W 34 1/2" x H 31"

# Our sustainability commitment

We believe that durability and sustainability start with choosing the right quality material, and wooden products are particularly suited for refurbishment.

As a vertically integrated company, we know we are in a unique position to contribute to a sustainable shift in the industry. From design to the sourcing of raw materials, packaging and testing, we pay great attention to environmental protection and consumer safety throughout the product-development process. As a company, we work to minimise waste and close the loop toward circularity. Together with our partners, we strive to do our humble share. Just as society and the industry evolve, so do we. We know there is no finish line in this journey and continue our efforts to constantly improve our products and operations.



## DURABILITY BY DESIGN

We pay particular attention to the quality of our products, not only during the development stage, but throughout the entire life cycle. We believe that durability and sustainability start with choosing the right quality material, and wooden products are particularly suited for refurbishment.

## THE ORIGIN OF OUR WOOD

The ultimate noble and renewable material, all our wood is sourced from responsibly and carefully managed forests compliant with the EU Timber Regulations and the Forest Law Enforcement, Governance and Trade (FLEGT) Action Plan. In addition, our wood sourced from Indonesia is verified under the Indonesian Timber Legality Assurance System (SVLK).

## FOCUS ON QUALITY

Producing furniture and accessories at the highest quality, strength and safety is extremely important to us. Our internal protocols are based on the standards set by ANSI (American National Standards Institute) and BIFMA (North American Business and Institutional Furniture Manufacturers Association). Products also meet specific requirements based around ecological and health regulations such as toxic substance use and flammability.

## WASTE REDUCTION AND CIRCULARITY

We want to remain as environmentally friendly as possible, working to reduce waste from the earliest design stage. With this principle, we design to reduce or reuse as much scrap wood as possible. Production waste such as leftover logs, wood and sawdust are reused for other purposes. With full control over the (re)design, production and distribution, refurbishing and recycling processes, we are developing a vision for sustainability based on designing for circularity and lengthening product lifespans.



#### DISCLAIMER.

The information contained within this catalog and the products offered are intended to provide information about products available for purchase from TGS. TGS does not warrant the accuracy and reserves the right to make changes to the catalog and its functions at any time without notice. The content of this catalog may not be distributed, modified, transmitted, or used in any manner for public or commercial purposes without written permission from TGS. Under no circumstances should the use of this catalog be construed as granting a license or right to use any of the intellectual property rights displayed in this catalog, without the written permission of TGS.

TGS  
[info@tgs-international.com](mailto:info@tgs-international.com)

**TGS**

[tgs-international.com](http://tgs-international.com)  
[info@tgs-international.com](mailto:info@tgs-international.com)